



## 2023 Traffic Fatality Monthly Report

As of 3/15/2023, the included table summarizes February traffic fatalities and 2023 year to date (YTD) traffic fatalities (through the end of February 2023) which adhere to the San Francisco Vision Zero traffic fatality case definition<sup>1</sup>. For comparison purposes, February 2018-2022 traffic fatalities and YTD totals are provided. The Vision Zero Fatality Reporting Map has been updated to reflect the most recent data ([map](#)) and this report will be posted on the website (<http://visionzerosf.org/maps-data/>).

Vision Zero Traffic Fatalities through February of Each Year\*

Traffic Victim	2023		2022		2021		2020		2019		2018	
	Feb. Count	YTD Total	Feb. Count	YTD Total	Feb. Count	YTD Total	Feb. Count	YTD Total	Feb. Count	YTD Total	Feb. Count	YTD Total
People Killed While Walking	0	3	0	1	2	3	1	1	1	3	1	1
People Killed While Cycling	0	0	0	0	0	0	0	0	0	0	0	0
People Killed While Riding a Standup Powered Device	0	0	0	0	0	0	0	0	0	0	0	0
People Killed While Riding in a Motor or Transit Vehicle	1	1	0	1	0	0	0	0	0	0	0	0
People Killed While Riding outside a Motor or Transit Vehicle	0	0	0	0	0	0	0	1	0	0	0	0
People Killed While on a Moped	0	0	0	0	0	0	0	0	0	0	0	0
People Killed While on a Motorcycle	0	0	0	0	0	0	0	1	0	0	0	0
People Killed While Driving	0	1	0	0	0	1	0	1	1	1	0	1
<b>TOTAL</b>	<b>1</b>	<b>5</b>	<b>0</b>	<b>2</b>	<b>2</b>	<b>4</b>	<b>1</b>	<b>4</b>	<b>2</b>	<b>4</b>	<b>1</b>	<b>2</b>

\* Data do not reflect freeway deaths occurring on grade-separated freeways/roadways under Caltrans jurisdiction in the City and County of San Francisco, which are tracked and mapped separately. They include:

2022: 2 people walking, 3 people on motorcycles, 3 people riding in vehicles  
 2021: 3 people walking, 1 person on a motorcycle, 3 people driving  
 2020: 2 people walking, 2 people on motorcycles, 1 person riding in a vehicle  
 2019: 2 people walking, 2 people on motorcycles, 4 people driving, 3 people riding in vehicles

2018: 1 person walking, 2 people on motorcycles, 1 person riding in a vehicle  
 2017: 3 people walking, 1 person on a motorcycle, 2 people driving  
 2016: 3 people walking, 2 people on motorcycles

Data Source: Motor Vehicle Death Reports, Office of the Chief Medical Examiner 2023, and SFPD Reports.

<sup>1</sup> SFDPH, SFMTA, and SFPD. 2020. Vision Zero Traffic Fatality Protocol: [https://www.sfdph.org/dph/files/EHSdocs/PHES/VisionZero/Vision\\_Zero\\_Traffic\\_Fatality\\_Protocol.pdf](https://www.sfdph.org/dph/files/EHSdocs/PHES/VisionZero/Vision_Zero_Traffic_Fatality_Protocol.pdf)



The Metropolitan Transportation Commission’s (MTC) Equity Priority Neighborhoods<sup>2</sup> highlight areas with high concentrations of poverty and vulnerable populations. For reference: In 2022, 32% (n=12) of fatalities occurred in an Equity Priority Neighborhood, 24% (n=9) of those killed were seniors,<sup>3</sup> and 73% (n=27) of fatalities occurred on the High Injury Network.<sup>4</sup>

In 2023 (through 2/28/2023):

Traffic Victim	YTD Total	Count in Equity Priority Neighborhoods	Percent in Equity Priority Neighborhoods	Count Seniors	Percent Seniors	Count on High Injury Network	Percent on High Injury Network
People Killed While Walking	3	2	67%	1	33%	3	100%
People Killed While Cycling	0	0		0		0	
People Killed While Riding a Standup Powered Device	0	0		0		0	
People Killed While Riding in a Motor Vehicle	1	0	0%	0	0%	1	100%
People Killed While Riding outside a Motor Vehicle	0	0		0		0	
People Killed While Riding on a Moped	0	0		0		0	
People Killed While on a Motorcycle	0	0		0		0	
People Killed While Driving	1	0	0%	0	0%	1	100%
<b>TOTAL</b>	<b>5</b>	<b>2</b>	<b>40%</b>	<b>1</b>	<b>20%</b>	<b>5</b>	<b>100%</b>

<sup>2</sup> Details available at: <https://mtc.ca.gov/planning/transportation/access-equity-mobility/equity-priority-communities>. As of 2023-03-15, this report uses the 2021 Equity Priority Neighborhood boundaries instead of the 2018 boundaries.

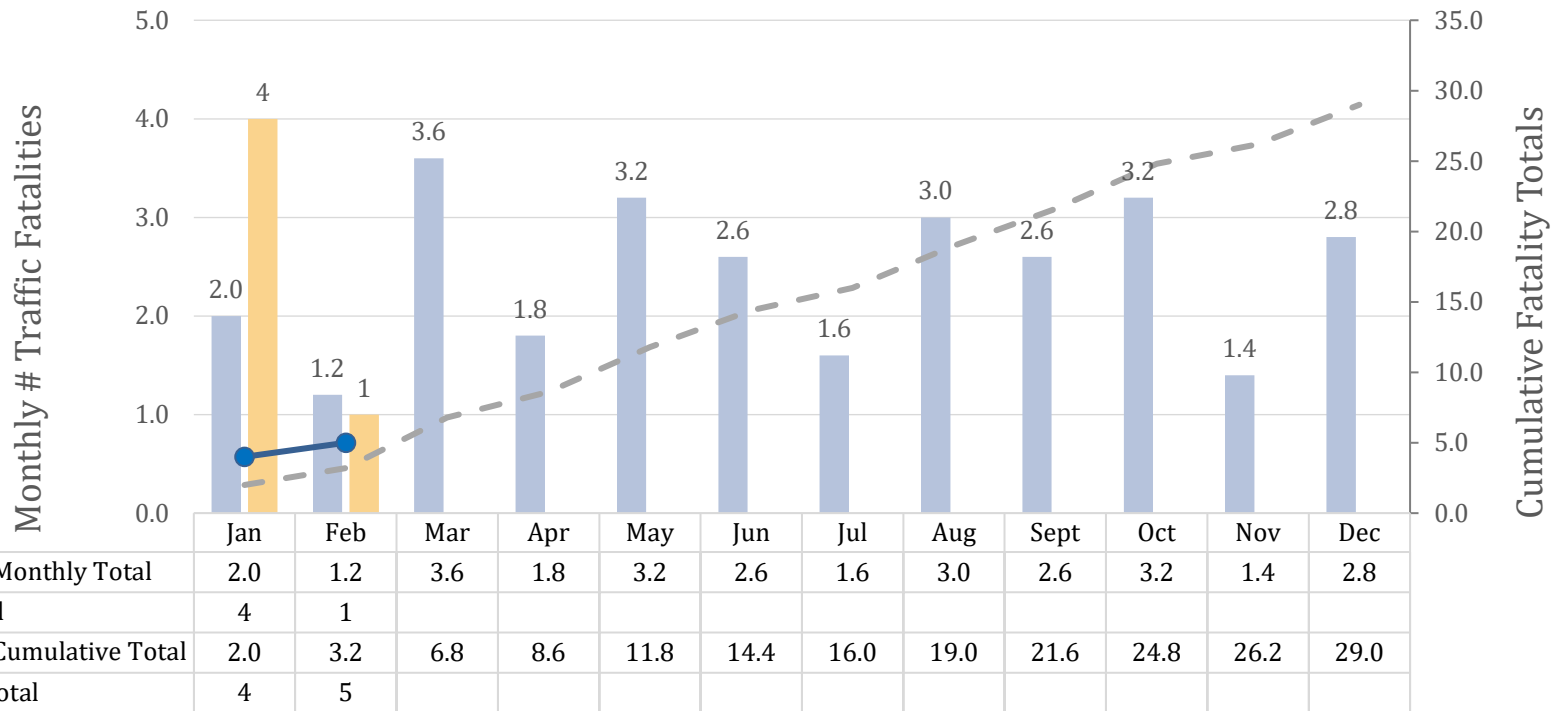
<sup>3</sup> Defined as people age 65 and up.

<sup>4</sup> As of 2023-03-15, this report uses the 2022 High Injury Network instead of the 2017 network. San Francisco’s Vision Zero High Injury Network represents the 12% of San Francisco streets where 68% of severe and fatal traffic injuries occurred between 2017-2021. More details available at:

<https://sfgov.maps.arcgis.com/apps/webappviewer/index.html?id=fa37f1274b4446f1bddd7bdf9e708ff>

This chart displays Vision Zero traffic fatalities over 2023 at monthly intervals as well as five-year cumulative and monthly average totals (2018-2022), providing a snapshot of traffic fatality trends in San Francisco.

Vision Zero Traffic Fatalities: 2023 and Five-Year Averages



**Contact**

For questions or comments regarding traffic fatalities, please contact Iris Tsui at [iris.tsui@sfdph.org](mailto:iris.tsui@sfdph.org).