



## 2021 Traffic Fatality Monthly Report

As of 2/9/2021, the included table summarizes January traffic fatalities and 2021 year to date (YTD) traffic fatalities (through the end of January 2021) which adhere to the San Francisco Vision Zero traffic fatality case definition<sup>1</sup>. For comparison purposes, January 2016-2020 traffic fatalities and YTD totals are provided. The Vision Zero Fatality Reporting Map has been updated to reflect the most recent data ([map](http://visionzerosf.org/maps-data/)) and this report will be posted on the website (<http://visionzerosf.org/maps-data/>).

Vision Zero Traffic Fatalities through January of Each Year\*

Traffic Victim	2021		2020		2019		2018		2017		2016	
	Jan. Count	YTD Total	Jan. Count	YTD Total	Jan. Count	YTD Total	Jan. Count	YTD Total	Jan. Count	YTD Total	Jan. Count	YTD Total
People Killed While Walking	1	1	0	0	2	2	0	0	1	1	2	2
People Killed While Cycling	0	0	0	0	0	0	0	0	0	0	0	0
People Killed While Riding a Standup Powered Device	0	0	0	0	0	0	0	0	0	0	0	0
People Killed While Riding in a Motor or Transit Vehicle	0	0	0	0	0	0	0	0	0	0	0	0
People Killed While Riding outside a Motor or Transit Vehicle	0	0	1	1	0	0	0	0	0	0	0	0
People Killed While on a Moped	0	0	0	0	0	0	0	0	0	0	0	0
People Killed While on a Motorcycle	0	0	1	1	0	0	0	0	0	0	0	0
People Killed While Driving	1	1	1	1	0	0	1	1	0	0	0	0
<b>TOTAL</b>	<b>2</b>	<b>2</b>	<b>3</b>	<b>3</b>	<b>2</b>	<b>2</b>	<b>1</b>	<b>1</b>	<b>1</b>	<b>1</b>	<b>2</b>	<b>2</b>

\* Data do not reflect freeway deaths occurring on grade-separated freeways/roadways under Caltrans jurisdiction in the City and County of San Francisco, which are tracked and mapped separately. They include:

2021: 1 person on a motorcycle

2020: 2 people walking, 2 people on motorcycles, 1 person riding in a vehicle

2019: 2 people walking, 2 people on motorcycles, 4 people driving, 3 people riding in vehicles

2018: 1 person walking, 2 people on motorcycles, 1 person riding in a vehicle

2017: 3 people walking, 1 person on a motorcycle, 2 people driving

2016: 3 people walking, 2 people on motorcycles

Note: The January death of a person riding a motorcycle following a 12/30/2020 crash has been retroactively added to December 2020 totals after being determined to meet the Vision Zero SF Traffic Fatality Protocol case definition. This brings the 2020 Vision Zero fatality count to 30 deaths. A comprehensive 2020 End of Year Traffic Fatality Report is forthcoming.

Data Source: Motor Vehicle Death Reports, Office of the Chief Medical Examiner 2021, and SFPD Reports.

<sup>1</sup> SFPD, SFMTA, and SFPD. 2020. Vision Zero Traffic Fatality Protocol: [https://www.sfdph.org/dph/files/EHSdocs/PHES/VisionZero/Vision\\_Zero\\_Traffic\\_Fatality\\_Protocol.pdf](https://www.sfdph.org/dph/files/EHSdocs/PHES/VisionZero/Vision_Zero_Traffic_Fatality_Protocol.pdf)

The Metropolitan Transportation Commission's (MTC) Communities of Concern<sup>2</sup> highlight areas with high concentrations of poverty and vulnerable populations. For reference: In 2020, 47% (n=14) of fatalities occurred in a Community of Concern, 13% (n=4) of those killed were seniors<sup>3</sup>, and 63% (n=19) of fatalities occurred on the High Injury Network<sup>4</sup>.

In 2021 (through 1/31/2021):

Traffic Victim	YTD Total	Count in Communities of Concern	Percent in Communities of Concern	Count Seniors	Percent Seniors	Count on High Injury Network	Percent on High Injury Network
People Killed While Walking	1	1	100%	1	100%	0	0%
People Killed While Cycling	0	0		0		0	
People Killed While Riding a Standup Powered Device	0	0		0		0	
People Killed While Riding in a Motor Vehicle	0	0		0		0	
People Killed While Riding outside a Motor Vehicle	0	0		0		0	
People Killed While Riding on a Moped	0	0		0		0	
People Killed While on a Motorcycle	0	0		0		0	
People Killed While Driving	1	1	100%	0	0%	1	100%
<b>TOTAL</b>	<b>2</b>	<b>2</b>	<b>100%</b>	<b>1</b>	<b>50%</b>	<b>1</b>	<b>50%</b>

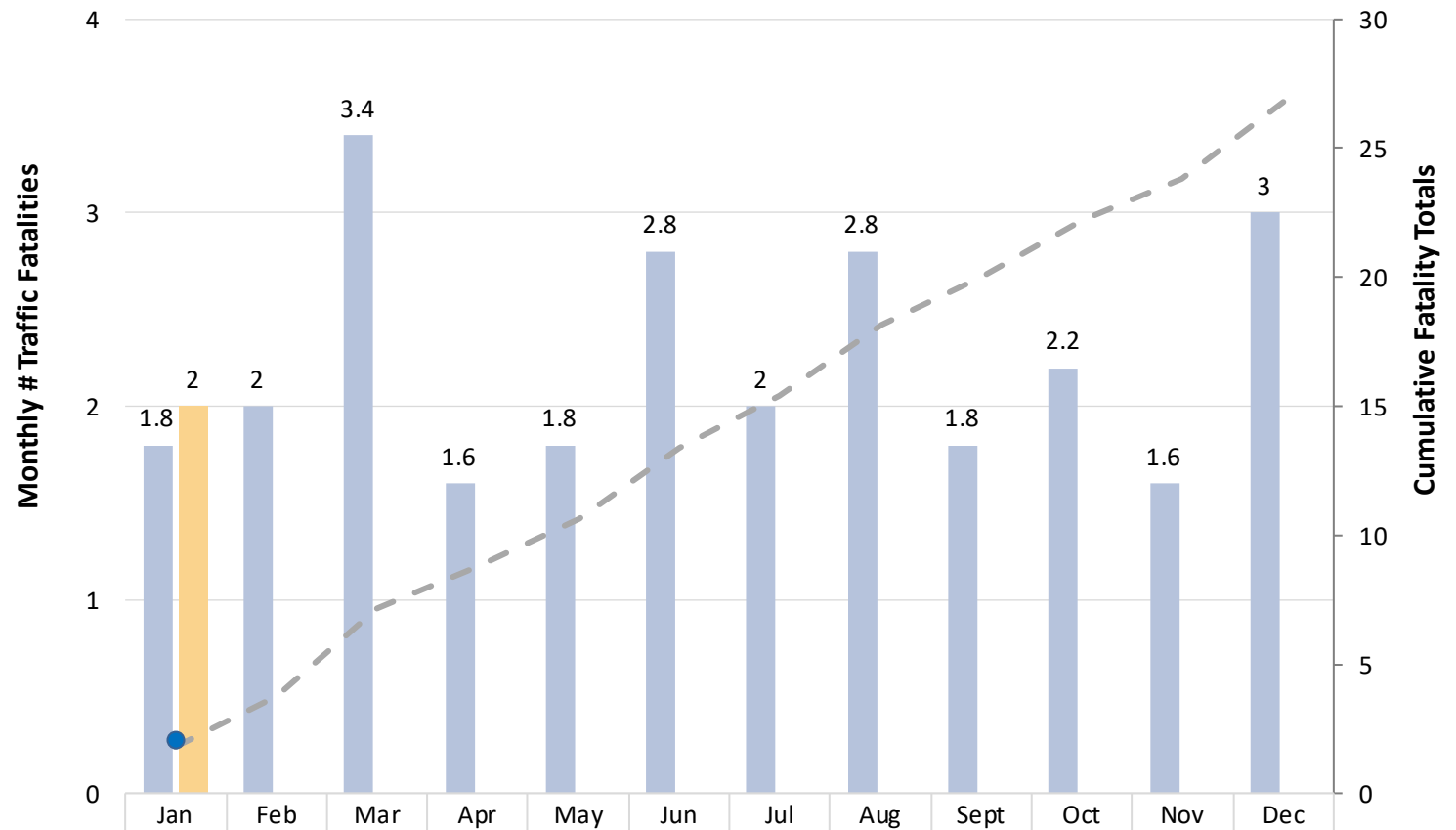
<sup>2</sup> Details available at: <https://www.sfcta.org/sites/default/files/content/Executive/Meetings/cac/2017/03-Mar/Community%20of%20Concern%20Supplemental%20Analysis%20Memo.pdf>

<sup>3</sup> Defined as people age 65 and up.

<sup>4</sup> San Francisco's Vision Zero High Injury Network represents the 13% of San Francisco streets where more than 75% of severe and fatal traffic injuries occur. More details available at: <https://sfgov.maps.arcgis.com/apps/webappviewer/index.html?id=fa37f1274b4446f1bddd7bdf9e708ff>

This chart displays Vision Zero traffic fatalities over 2021 at monthly intervals as well as five-year cumulative and monthly average totals (2016-2020), providing a snapshot of traffic fatality trends in San Francisco.

### Vision Zero Traffic Fatalities: 2021 and Five-Year Averages



Five-year Average Monthly Total	1.8	2	3.4	1.6	1.8	2.8	2	2.8	1.8	2.2	1.6	3
2021 Monthly Total	2											
Five-year Average Cumulative Total	1.8	3.8	7.2	8.8	10.6	13.4	15.4	18.2	20	22.2	23.8	26.8
2021 Cumulative Total	2											

#### Contact

For questions or comments regarding traffic fatalities, please contact Shamsi Soltani, Vision Zero Epidemiologist at [Shamsi.Soltani@sfdph.org](mailto:Shamsi.Soltani@sfdph.org).