



2020 Traffic Fatality Monthly Report

As of 2/26/2020, the included table summarizes January traffic fatalities and all 2020 year to date (YTD) traffic fatalities (through the end of January 2020) which adhere to the San Francisco Vision Zero traffic fatality case definition¹. For comparison purposes, January 2015-2019 traffic fatalities and YTD totals are provided. The Vision Zero Fatality Reporting Map has been updated to reflect the most recent data ([map](#)) and this report will be posted on the website (<http://visionzerosf.org/maps-data/>).

Vision Zero Traffic Fatalities through January of Each Year*

Traffic Victim	2020		2019		2018		2017		2016		2015	
	YTD Count	Jan. Count	YTD Total	Jan. Count	YTD Total	Jan. Count	Jan. Count	YTD Total	Jan. Count	YTD Total	Jan. Count	YTD Total
People Killed While Walking	0	0	2	2	0	0	1	1	2	2	0	0
People Killed While Cycling	0	0	0	0	0	0	0	0	0	0	0	0
People Killed While Riding a Standup Powered Device	0	0	0	0	0	0	0	0	0	0	0	0
People Killed While Riding in a Motor or Transit Vehicle	0	0	0	0	0	0	0	0	0	0	0	0
People Killed While Riding outside a Motor or Transit Vehicle**	1	1	0	0	0	0	0	0	0	0	0	0
People Killed While on a Moped	0	0	0	0	0	0	0	0	0	0	0	0
People Killed While on a Motorcycle	1	1	0	0	0	0	0	0	0	0	1	1
People Killed While Driving	0	0	0	0	1	1	0	0	0	0	0	0
TOTAL	2	2	2	2	1	1	1	1	2	2	1	1

* Data do not reflect freeway deaths occurring on grade-separated freeways/roadways under Caltrans jurisdiction in the City and County of San Francisco, which are tracked and mapped separately. They include:

2020: 1 person walking, 1 person riding in a vehicle
 2019: 2 people walking, 2 people on motorcycles, 4 people driving, 3 people riding in vehicles

2018: 1 person walking, 2 people on motorcycles, 1 person riding in a vehicle
 2017: 3 people walking, 1 person on a motorcycle, 2 people driving
 2016: 3 people walking, 2 people on motorcycles
 2015: 3 people walking, 1 person on a motorcycle, 1 person driving

** One person in this category in 2020 was killed while riding on the outside of an above-ground light rail vehicle. This collision is not captured in the CHP's Statewide Integrated Traffic Records System.

Notes: • A 1/8/2019 crash resulting in a driver fatality is currently under investigation by the Office of the Medical Examiner and will be added to this reporting if found to meet fatality protocol criteria.

Data Source: Motor Vehicle Death Reports, Office of the Chief Medical Examiner 2020, and SFPD Reports.

¹ SFPD, SFMTA, and SFPD. 2019. Vision Zero Traffic Fatality Protocol: www.visionzerosf.org/wp-content/uploads/2019/11/Vision-Zero-Traffic-Fatality-Protocol_2019_6.0.pdf



The Metropolitan Transportation Commission’s (MTC) Communities of Concern² highlight areas with high concentrations of poverty and vulnerable populations. For reference: In 2019, 69% (n=20) of fatalities occurred in a Community of Concern, 41% (n=12) of those killed were seniors³, and 66% (n=19) of fatalities occurred on the High Injury Network⁴.

In 2020 (through 1/31/2020):

Traffic Victim	YTD Total	Count in Communities of Concern	Percent in Communities of Concern	Count Seniors	Percent Seniors	Count on High Injury Network	Percent on High Injury Network
People Killed While Walking	0	0	0%	0	0%	0	0%
People Killed While Cycling	0	0	0%	0	0%	0	0%
People Killed While Riding a Standup Powered Device	0	0	0%	0	0%	0	0%
People Killed While Riding in a Motor Vehicle	0	0	0%	0	0%	0	0%
People Killed While Riding outside a Motor Vehicle	1	1	100%	0	0%	0	0%
People Killed While Riding on a Moped	0	0	0%	0	0%	0	0%
People Killed While on a Motorcycle	1	1	100%	0	0%	1	100%
People Killed While Driving	0	0	0%	0	0%	0	0%
TOTAL	2	2	100%	0	0%	1	50%

Summary descriptions of traffic fatalities since last-released memo:

A person on the coupler connecting two Muni light rail vehicle cars, a non-designated passenger area, fell and was crushed.

A motorcyclist collided into the back of a motor vehicle.

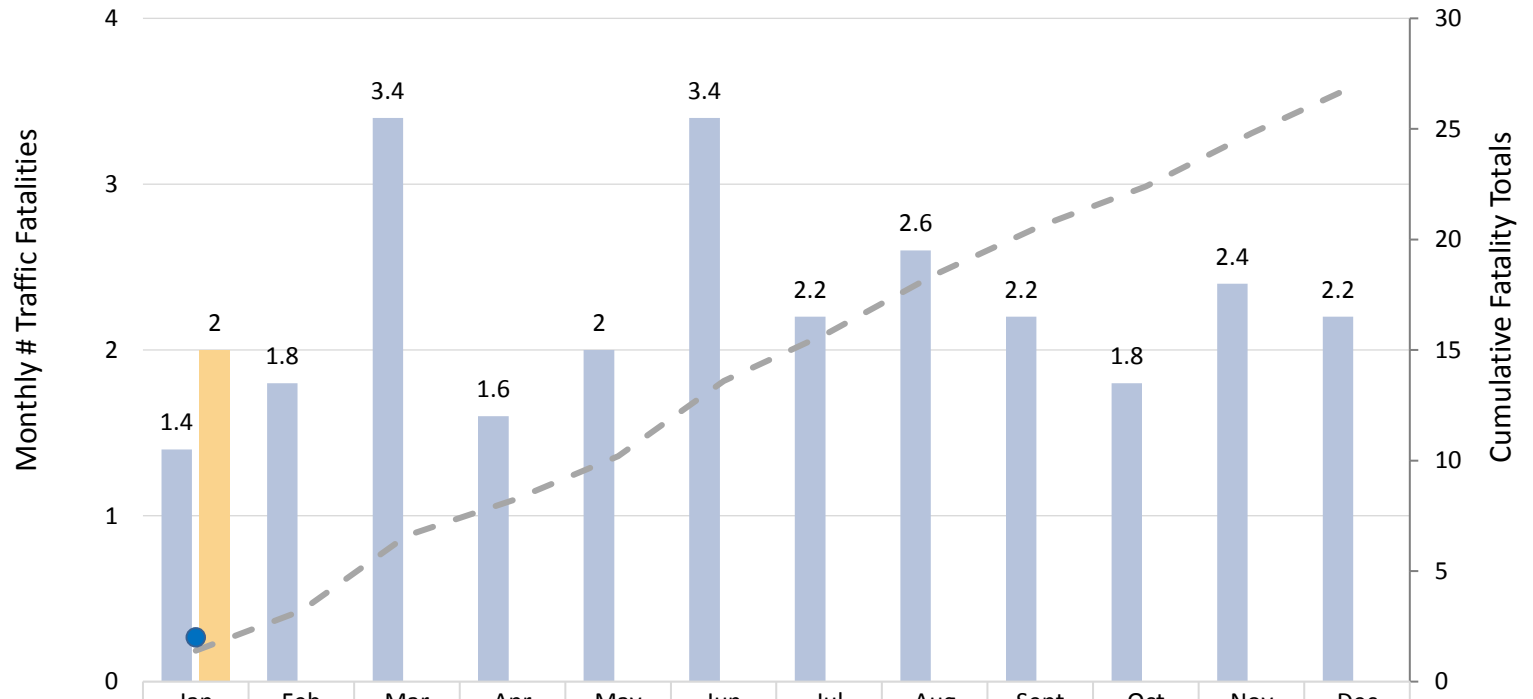
² Details available at: <https://www.sfcta.org/sites/default/files/content/Executive/Meetings/cac/2017/03-Mar/Community%20of%20Concern%20Supplemental%20Analysis%20Memo.pdf>

³ Defined as people age 65 and up.

⁴ San Francisco’s Vision Zero High Injury Network represents the 13% of San Francisco streets where more than 75% of severe and fatal traffic injuries occur. More details available at: <https://sfgov.maps.arcgis.com/apps/webappviewer/index.html?id=fa37f1274b4446f1bddd7bdf9e708ff>

This chart displays Vision Zero traffic fatalities over 2020 at monthly intervals as well as five-year cumulative and monthly average totals (2015-2019), providing a concise snapshot of traffic fatality trends in San Francisco.

Vision Zero Traffic Fatalities: 2020 and Five-Year Averages



	Jan	Feb	Mar	Apr	May	Jun	Jul	Aug	Sept	Oct	Nov	Dec
Five-year Average Monthly Total	1.4	1.8	3.4	1.6	2	3.4	2.2	2.6	2.2	1.8	2.4	2.2
2020 Monthly Total	2											
Five-year Average Cumulative Total	1.4	3.2	6.6	8.2	10.2	13.6	15.8	18.4	20.6	22.4	24.8	27
2020 Cumulative Total	2											

Contact

For questions or comments regarding traffic fatalities, please contact Shamsi Soltani, Vision Zero Epidemiologist at Shamsi.Soltani@sfdph.org.