



## 2019 Traffic Fatality Monthly Report

As of 9/12/2019, the included table summarizes August traffic fatalities and all 2019 year to date (YTD) traffic fatalities (through the end of August 2019) which adhere to the San Francisco Vision Zero traffic fatality case definition<sup>1</sup>. For comparison purposes, August 2014-2018 traffic fatalities are provided as well as YTD totals. The Vision Zero Fatality Reporting Map has been updated to reflect the most recent data ([map](#)) and this report will be posted on the website (<http://visionzerosf.org/maps-data/>).

Vision Zero Traffic Fatalities through August of Each Year\*

Traffic Victim	2019		2018		2017		2016		2015		2014	
	Aug. Count	YTD Total	Aug. Count	YTD Total	Aug. Count	YTD Total	Aug. Count	YTD Total	Aug. Count	YTD Total	Aug. Count	YTD Total
People Killed While Walking**	1	14	2	9	2	6	1	11	1	12	3	12
People Killed While Cycling	0	1	1	2	0	2	0	3	0	2	0	2
People Killed While Riding in a Motor Vehicle	0	2	0	0	0	0	0	5	0	0	0	0
People Killed While on a Motorcycle	0	1	1	1	1	4	0	1	1	4	0	3
People Killed While Driving	0	4	0	2	0	0	1	4	0	1	0	2
<b>TOTAL</b>	<b>1</b>	<b>22</b>	<b>4</b>	<b>14</b>	<b>3</b>	<b>12</b>	<b>2</b>	<b>24</b>	<b>2</b>	<b>19</b>	<b>3</b>	<b>19</b>

\* Data do not reflect freeway deaths occurring on grade-separated freeways/roadways under Caltrans jurisdiction in the City and County of San Francisco, which are tracked and mapped separately. They include:

- 2019: 2 people walking, 1 person on a motorcycle, 2 people driving
- 2018: 1 person walking, 2 people on motorcycles, 1 person riding in a vehicle
- 2017: 3 people walking, 1 person on a motorcycle, 2 people driving
- 2016: 3 people walking, 2 people on motorcycles
- 2015: 3 people walking, 1 person on a motorcycle, 1 person driving
- 2014: 1 person walking, 1 person on a motorcycle, 1 person driving, 2 people riding in a vehicle

\*\* One person in this category in 2019 was killed while riding a skateboard. The death is classified as a pedestrian fatality in parallel with OME reporting and CHP guidance.

Note: A 7/1/2019 collision resulting in a pedestrian fatality at San Francisco International Airport’s arrivals terminal is not included in the Vision Zero fatality count. In addition, an 8/4/2019 death is under investigation by the Office of the Medical Examiner and will be added to this reporting if determined to be traffic related.

Data Source: Motor Vehicle Death Reports, Office of the Chief Medical Examiner 2019, and SFPD Reports.

<sup>1</sup> SFDPH, SFMTA, and SFPD. 2016. Vision Zero Traffic Fatality Protocol available at: <https://www.sfdph.org/dph/EH/PHES/PHES/TransportationandHealth.asp>



The Metropolitan Transportation Commission’s (MTC) Communities of Concern<sup>2</sup> highlight areas with high concentrations of poverty and vulnerable populations. For reference: In 2018, 52% (n=12) of fatalities occurred in a Community of Concern, 35% (n=8) of those killed were seniors<sup>3</sup>, and 48% (n=11) of fatalities occurred on the High Injury Network<sup>4</sup>.

In 2019:

Traffic Victim	YTD Total	Count in Communities of Concern	Percent in Communities of Concern	Count Seniors	Percent Seniors	Count on High Injury Network	Percent on High Injury Network
People Killed While Walking	13	9	64%	6	43%	10	71%
People Killed While Cycling	1	1	100%	0	0%	1	100%
People Killed While Riding in a Motor Vehicle	2	2	100%	0	0%	2	100%
People Killed While on a Motorcycle	1	0	0%	0	0%	1	100%
People Killed While Driving	4	2	50%	1	25%	2	50%
<b>TOTAL</b>	<b>21</b>	<b>14</b>	<b>64%</b>	<b>7</b>	<b>32%</b>	<b>16</b>	<b>73%</b>

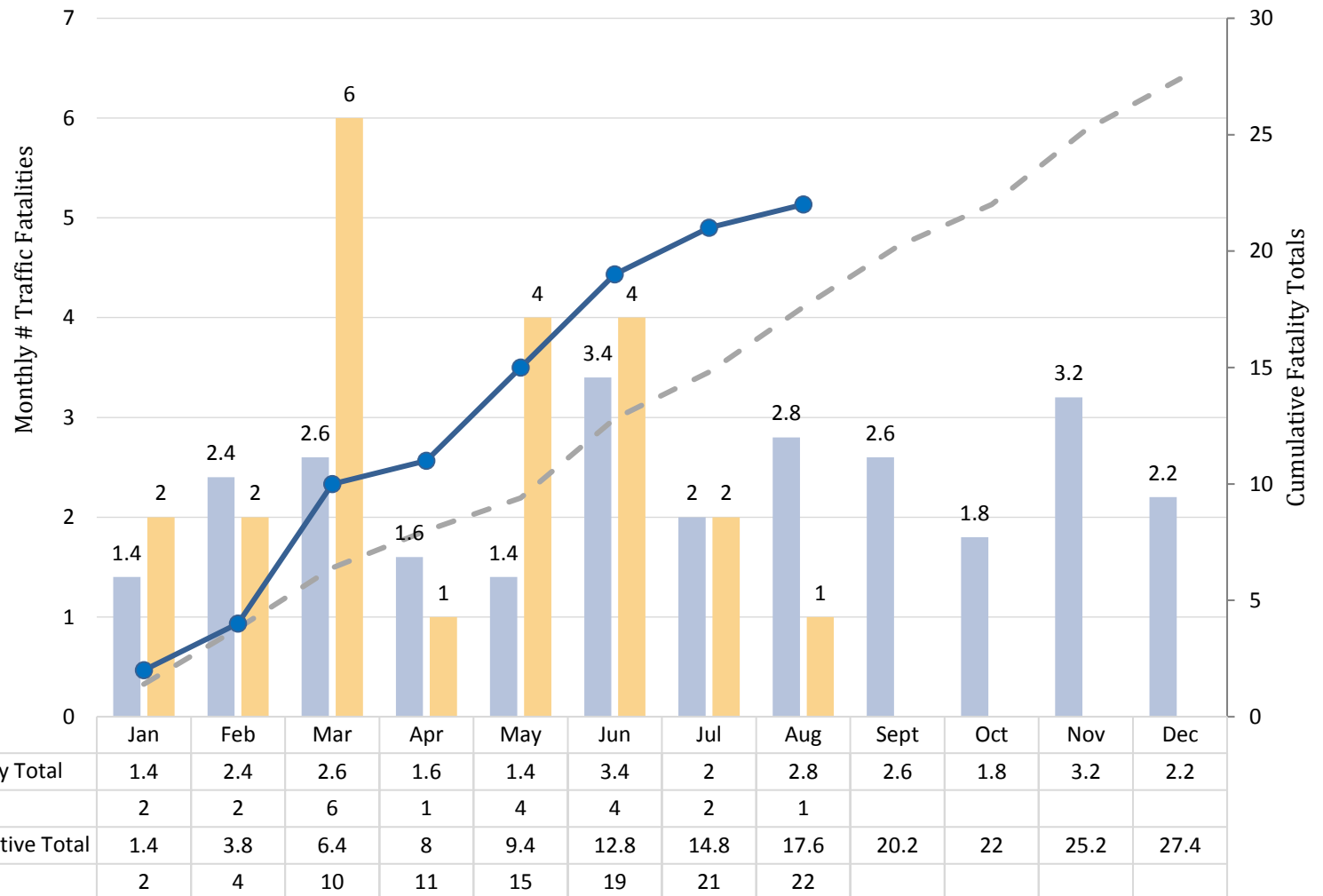
<sup>2</sup> Details available at: <https://www.sfcta.org/sites/default/files/content/Executive/Meetings/cac/2017/03-Mar/Community%20of%20Concern%20Supplemental%20Analysis%20Memo.pdf>

<sup>3</sup> Defined as people age 65 and up.

<sup>4</sup> San Francisco’s Vision Zero High Injury Network represents the 13% of San Francisco streets where more than 75% of severe and fatal traffic injuries occur. More details available at: <https://sfgov.maps.arcgis.com/apps/webappviewer/index.html?id=fa37f1274b4446f1bddd7bdf9e708ff>

This chart displays Vision Zero traffic fatalities over 2019 at monthly intervals as well as five-year cumulative and monthly average totals, providing a concise snapshot of traffic fatality trends in San Francisco.

## Vision Zero Traffic Fatalities: 2019 and Five-Year Averages



### Contact

For questions or comments regarding traffic fatalities, please contact Shamsi Soltani, Vision Zero Epidemiologist at [Shamsi.Soltani@sfdph.org](mailto:Shamsi.Soltani@sfdph.org).